

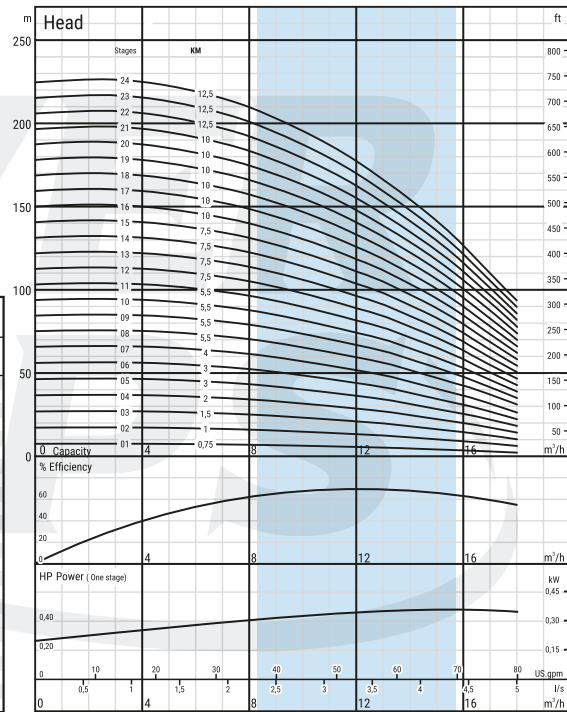


Technical Specifications VSP SS 06010/01 - 24 Range

Diffuser	: Stainless steel (AISI 304L)	Max. sand content	: 50 gr / m ³
Impeller	: Stainless steel (AISI 304L)	Valve cap	: Stainless steel
Pump shaft	: Stainless steel (AISI 420)	Voltage	: 380-415 V (+%6 / -%10)
Coupling	: Stainless steel (AISI 420)	Frequency	: 50 Hz.
Strainer	: Stainless steel (AISI 304)	Max. water temperature	: 50°C
Outlet connection diameter	: 2 1/2" (inside threaded)	Degree of protection	: IP 68



CONTACT US TODAY 021 556 1834 POWERPUMPS.CO.ZA



Pump Model	Stages	Motor		Dimensions (mm)					Weight (kg)		
		kW	HP	L	LM	LP	Φ M	Φ P	Motor	Pump	Total
VSP SS 06010/01	1	0,55	0,75	691	361	330	95	132	8,6	5	13,6
VSP SS 06010/02	2	0,75	1	771	381	390	95	132	9,5	7	16,5
VSP SS 06010/03	3	1,1	1,5	852	401	451	95	132	10,35	8	18,35
VSP SS 06010/04	4	1,5	2	952	441	511	95	132	10,4	10	20,4
VSP SS 06010/05	5	2,2	3	1043	471	572	95	132	13,9	11	24,9
VSP SS 06010/06	6	2,2	3	1103	471	632	95	132	13,9	13	26,9
VSP SS 06010/07	7	3	4	1223	530	693	95	132	16,2	14	30,2
VSP SS 06010/08	8	4	5,5	1353/1402	600/649	753	95/142	132	19,8/40	15	34,8/55
VSP SS 06010/09	9	4	5,5	1414/1463	600/649	814	95/142	132	19,8/40	17	36,8/57
VSP SS 06010/10	10	4	5,5	1474/1523	600/649	874	95/142	132	19,8/40	18	37,8/58
VSP SS 06010/11	11	4	5,5	1535/1584	600/649	935	95/142	132	19,8/40	20	39,8/60
VSP SS 06010/12	12	5,5	7,5	1650/1644	655/649	995	95/142	132	22,5/40	21	43,5/61
VSP SS 06010/13	13	5,5	7,5	1711/1705	655/649	1056	95/142	132	22,5/40	23	45,5/63
VSP SS 06010/14	14	5,5	7,5	1771/1765	655/649	1116	95/142	132	22,5/40	24	46,5/64
VSP SS 06010/15	15	5,5	7,5	1832/1826	655/649	1177	95/142	132	22,5/40	26	48,5/66
VSP SS 06010/16	16	7,5	10	2032/1915	795/678	1237	95/142	132	28,8/43,5	27	55,8/70,5
VSP SS 06010/17	17	7,5	10	2093/1976	795/678	1298	95/142	132	28,8/43,5	28	56,8/71,5
VSP SS 06010/18	18	7,5	10	2153/2036	795/678	1358	95/142	132	28,8/43,5	30	58,8/73,5
VSP SS 06010/19	19	7,5	10	2214/2097	795/678	1419	95/142	132	28,8/43,5	31	59,8/74,5
VSP SS 06010/20	20	7,5	10	2274/2157	795/678	1479	95/142	132	28,8/43,5	33	61,8/76,5
VSP SS 06010/21	21	7,5	10	2335/2218	795/678	1540	95/142	132	28,8/43,5	34	62,8/77,5
VSP SS 06010/22	22	9,3	12,5	2358	758	1600	142	132	50	36	86
VSP SS 06010/23	23	9,3	12,5	2419	758	1661	142	132	50	37	87
VSP SS 06010/24	24	9,3	12,5	2479	758	1721	142	132	50	39	89



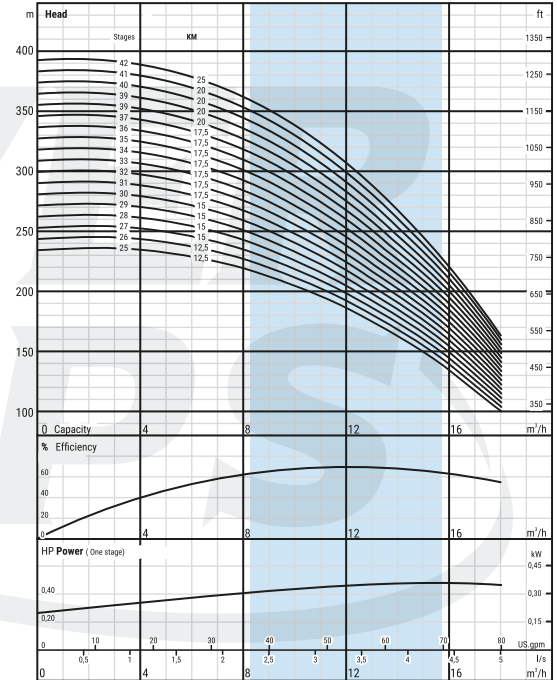
Technical Specifications VSP SS 06010/25 - 42 Range

- Diffuser** : Stainless steel (AISI 304L) **Max. sand content** : 50 gr / m³
- Impeller** : Stainless steel (AISI 304L) **Valve cap** : Stainless steel
- Pump shaft** : Stainless steel (AISI 420) **Voltage** : 380-415 V (+%6 / -%10)
- Coupling** : Stainless steel (AISI 420) **Frequency** : 50 Hz.
- Strainer** : Stainless steel (AISI 304) **Max. water temperature** : 50°C
- Outlet connection diameter** : 2 1/2" (inside threaded) **Degree of protection** : IP 68



CONTACT US TODAY 021 556 1834 POWERPUMPS.CO.ZA

Pump Model	Stages	Motor		Dimensions (mm)					Weight (kg)		
		kW	HP	L	LM	LP	ΦM	ΦP	Motor	Pump	Total
VSP SS 06010/25	25	9,3	12,5	2540	758	1782	142	132	50	40	90
VSP SS 06010/26	26	9,3	12,5	2600	758	1842	142	132	50	41	91
VSP SS 06010/27	27	11	15	2703	800	1903	142	132	55	43	98
VSP SS 06010/28	28	11	15	2763	800	1963	142	132	55	44	99
VSP SS 06010/29	29	11	15	2824	800	2024	142	132	55	46	101
VSP SS 06010/30	30	11	15	2884	800	2084	142	132	55	47	102
VSP SS 06010/31	31	13	17,5	2996	851	2145	142	132	60	49	109
VSP SS 06010/32	32	13	17,5	3056	851	2205	142	132	60	50	110
VSP SS 06010/33	33	13	17,5	3117	851	2266	142	132	60	52	112
VSP SS 06010/34	34	13	17,5	3177	851	2326	142	132	60	53	113
VSP SS 06010/35	35	13	17,5	3238	851	2387	142	132	60	54	114
VSP SS 06010/36	36	13	17,5	3298	851	2447	142	132	60	56	116
VSP SS 06010/37	37	13	17,5	3359	851	2508	142	132	60	57	117
VSP SS 06010/38	38	15	20	3479	911	2568	142	132	65	59	124
VSP SS 06010/39	39	15	20	3790	911	2879	142	167	65	91	156
VSP SS 06010/40	40	15	20	3850	911	2939	142	167	65	92	157
VSP SS 06010/41	41	15	20	3911	911	3000	142	167	65	94	159
VSP SS 06010/42	42	18,5	25	4033	973	3060	142	167	72	96	168



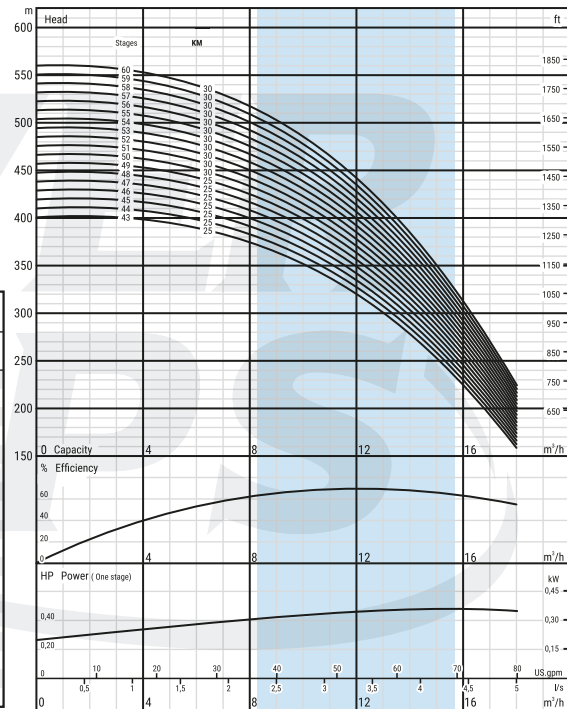


Technical Specifications VSP SS 06010/43 - 60 Range

Diffuser	: Stainless steel (AISI 304L)	Max. sand content	: 50 gr / m ³
Impeller	: Stainless steel (AISI 304L)	Valve cap	: Stainless steel
Pump shaft	: Stainless steel (AISI 420)	Voltage	: 380-415 V (+%6 / -%10)
Coupling	: Stainless steel (AISI 420)	Frequency	: 50 Hz.
Strainer	: Stainless steel (AISI 304)	Max. water temperature	: 50°C
Outlet connection diameter	: 2 1/2" (inside threaded)	Degree of protection	: IP 68



CONTACT US TODAY 021 556 1834 POWERPUMPS.CO.ZA



Pump Model	Stages	Motor		Dimensions (mm)					Weight (kg)		
		kW	HP	L	LM	LP	Φ M	Φ P	Motor	Pump	Total
VSP SS 06010/43	43	18,5	25	4094	973	3121	142	167	72	98	170
VSP SS 06010/44	44	18,5	25	4154	973	3181	142	167	72	100	172
VSP SS 06010/45	45	18,5	25	4215	973	3242	142	167	72	101	173
VSP SS 06010/46	46	18,5	25	4275	973	3302	142	167	72	103	175
VSP SS 06010/47	47	18,5	25	4336	973	3363	142	167	72	105	177
VSP SS 06010/48	48	18,5	25	4396	973	3423	142	167	72	107	179
VSP SS 06010/49	49	18,5	25	4457	973	3484	142	167	72	108	180
VSP SS 06010/50	50	22	30	4550/4384	1006/840	3544	142/172	167	76/81	110	186/191
VSP SS 06010/51	51	22	30	4611/4445	1006/840	3605	142/172	167	76/81	112	188/193
VSP SS 06010/52	52	22	30	4671/4505	1006/840	3665	142/172	167	76/81	114	190/195
VSP SS 06010/53	53	22	30	4732/4566	1006/840	3726	142/172	167	76/81	116	192/197
VSP SS 06010/54	54	22	30	4792/4626	1006/840	3786	142/172	167	76/81	117	193/198
VSP SS 06010/55	55	22	30	4853/4687	1006/840	3847	142/172	167	76/81	119	195/200
VSP SS 06010/56	56	22	30	4913/4747	1006/840	3907	142/172	167	76/81	121	197/202
VSP SS 06010/57	57	22	30	4974/4808	1006/840	3968	142/172	167	76/81	123	199/204
VSP SS 06010/58	58	22	30	5034/4868	1006/840	4028	142/172	167	76/81	125	201/206
VSP SS 06010/59	59	22	30	5095/4929	1006/840	4089	142/172	167	76/81	126	202/207
VSP SS 06010/60	60	22	30	5155/4989	1006/840	4149	142/172	167	76/81	128	204/209



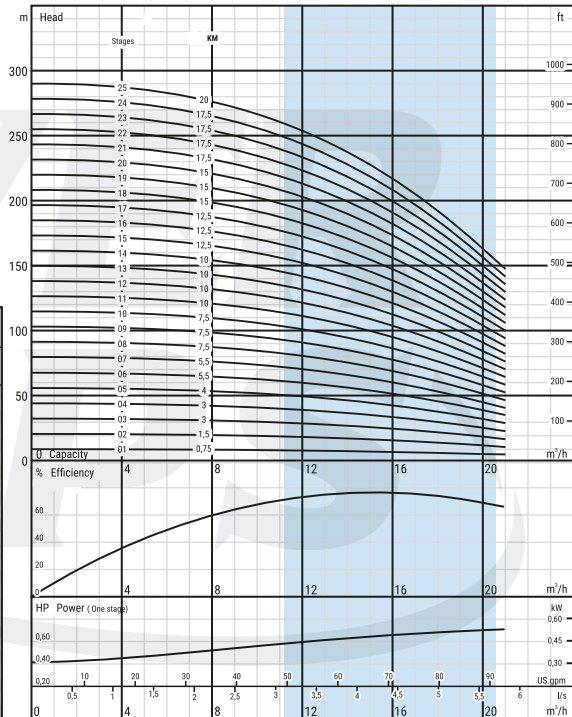
Technical Specifications VSP SS 06017/01 - 25 Range

Diffuser	: Stainless steel (AISI 304L)	Max. sand content	: 50 gr / m ³
Impeller	: Stainless steel (AISI 304L)	Valve cap	: Stainless steel
Pump shaft	: Stainless steel (AISI 420)	Voltage	: 380-415 V (+%6 / -%10)
Coupling	: Stainless steel (AISI 420)	Frequency	: 50 Hz.
Strainer	: Stainless steel (AISI 304)	Max. water temperature	: 50°C
Outlet connection diameter	: 2 1/2" (inside threaded)	Degree of protection	: IP 68



CONTACT US TODAY 021 556 1834 POWERPUMPS.CO.ZA

Pump Model	Stages	Motor		Dimensions (mm)					Weight (kg)		
		kW	HP	L	LM	LP	Φ M	Φ P	Motor	Pump	Total
VSP SS 06017/01	1	0,55	0,75	1342	361	330	95	132	8,6	5	13,6
VSP SS 06017/02	2	1,1	1,5	1431	401	390	95	132	10,35	7	17,35
VSP SS 06017/03	3	2,2	3	1492	471	451	95	132	13,9	8	21,9
VSP SS 06017/04	4	2,2	3	1552	471	511	95	132	13,9	10	23,9
VSP SS 06017/05	5	3	4	1693	530	572	95	132	16,2	11	27,2
VSP SS 06017/06	6	4	5,5	1753	600/649	632	95/142	132	19,8/40	13	32,8/53
VSP SS 06017/07	7	4	5,5	1293/1342	600/649	693	95/142	132	19,8/40	14	33,8/54
VSP SS 06017/08	8	5,5	7,5	1408/1402	655/649	753	95/142	132	22,5/40	16	38,5/56
VSP SS 06017/09	9	5,5	7,5	1469/1463	655/649	814	95/142	132	22,5/40	17	39,5/57
VSP SS 06017/10	10	5,5	7,5	1529/1523	655/649	874	95/142	132	22,5/40	18	40,5/58
VSP SS 06017/11	11	7,5	10	1730/1613	795/678	935	95/142	132	28,8/43,5	20	48,8/63,5
VSP SS 06017/12	12	7,5	10	1790/1673	795/678	995	95/142	132	28,8/43,5	21	49,8/64,5
VSP SS 06017/13	13	7,5	10	1851/1734	795/678	1056	95/142	132	28,8/43,5	23	51,8/66,5
VSP SS 06017/14	14	7,5	10	1911/1794	795/678	1116	95/142	132	28,8/43,5	24	52,8/67,5
VSP SS 06017/15	15	9,3	12,5	1935	758	1177	142	132	50	26	76
VSP SS 06017/16	16	9,3	12,5	1995	758	1237	142	132	50	27	77
VSP SS 06017/17	17	9,3	12,5	2056	758	1298	142	132	50	29	79
VSP SS 06017/18	18	11	15	2158	800	1358	142	132	55	30	85
VSP SS 06017/19	19	11	15	2219	800	1419	142	132	55	31	86
VSP SS 06017/20	20	11	15	2279	800	1479	142	132	55	33	88
VSP SS 06017/21	21	13	17,5	2391	851	1540	142	132	60	34	94
VSP SS 06017/22	22	13	17,5	2451	851	1600	142	132	60	36	96
VSP SS 06017/23	23	13	17,5	2512	851	1661	142	132	60	37	97
VSP SS 06017/24	24	13	17,5	2572	851	1721	142	132	60	39	99
VSP SS 06017/25	25	15	20	2693	911	1782	142	132	65	40	105





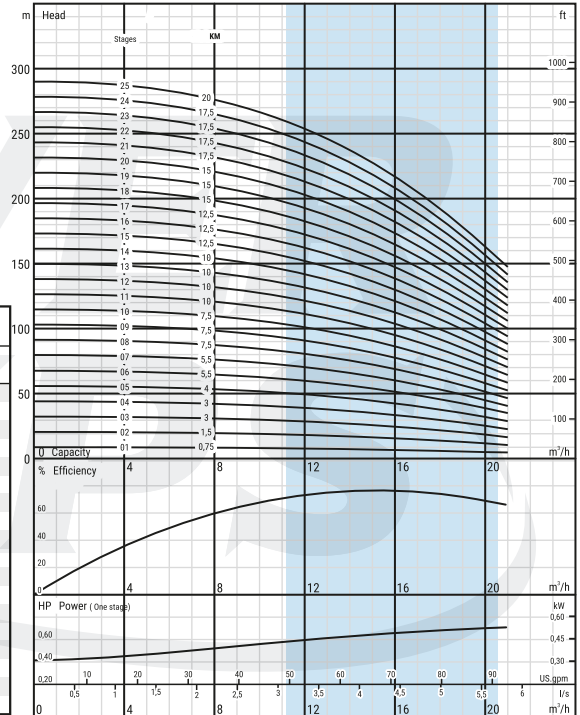
Technical Specifications VSP SS 06017/26 - 43 Range

Diffuser	: Stainless steel (AISI 304L)	Max. sand content	: 50 gr / m ³
Impeller	: Stainless steel (AISI 304L)	Valve cap	: Stainless steel
Pump shaft	: Stainless steel (AISI 420)	Voltage	: 380-415 V (+%6 / -%10)
Coupling	: Stainless steel (AISI 420)	Frequency	: 50 Hz.
Strainer	: Stainless steel (AISI 304)	Max. water temperature	: 50°C
Outlet connection diameter	: 2 1/2" (inside threaded)	Degree of protection	: IP 68



CONTACT US TODAY 021 556 1834 POWERPUMPS.CO.ZA

Pump Model	Stages	Motor		Dimensions (mm)					Weight (kg)		
		kW	HP	L	LM	LP	Φ M	Φ P	Motor	Pump	Total
VSP SS 06017/26	26	15	20	2753	911	1842	142	132	65	42	107
VSP SS 06017/27	27	15	20	2814	911	1903	142	132	65	43	108
VSP SS 06017/28	28	18,5	20	2874	911	1963	142	132	65	45	110
VSP SS 06017/29	29	18,5	25	2997	973	2024	142	132	72	46	118
VSP SS 06017/30	30	18,5	25	3057	973	2084	142	132	72	47	119
VSP SS 06017/31	31	18,5	25	3118	973	2145	142	132	72	49	121
VSP SS 06017/32	32	18,5	25	3178	973	2205	142	132	72	50	122
VSP SS 06017/33	33	18,5	25	3239	973	2266	142	132	72	52	124
VSP SS 06017/34	34	22	25	3299	973	2326	142	132	72	53	125
VSP SS 06017/35	35	22	30	3393 / 3227	1006/840	2387	142/172	132	76/81	55	131/136
VSP SS 06017/36	36	22	30	3453 / 3287	1006/840	2447	142/172	132	76/81	56	132/137
VSP SS 06017/37	37	22	30	3514 / 3348	1006/840	2508	142/172	132	76/81	58	134/139
VSP SS 06017/38	38	22	30	3574 / 3408	1006/840	2568	142/172	132	76/81	59	135/140
VSP SS 06017/39	39	22	30	3885 / 3719	1006/840	2879	142/172	132	76/81	60	136/141
VSP SS 06017/40	40	22	30	3945 / 3779	1006/840	2939	142/172	132	76/81	62	138/143
VSP SS 06017/41	41	22	30	4106 / 3840	1006/840	3000	142/172	132	76/81	63	139/144
VSP SS 06017/42	42	26,5	35	4166 / 3950	1106/890	3060	142/172	132	87/86	65	152/151
VSP SS 06017/43	43	26,5	35	4227 / 4011	1106/890	3121	142/172	167	87/86	98	185/184





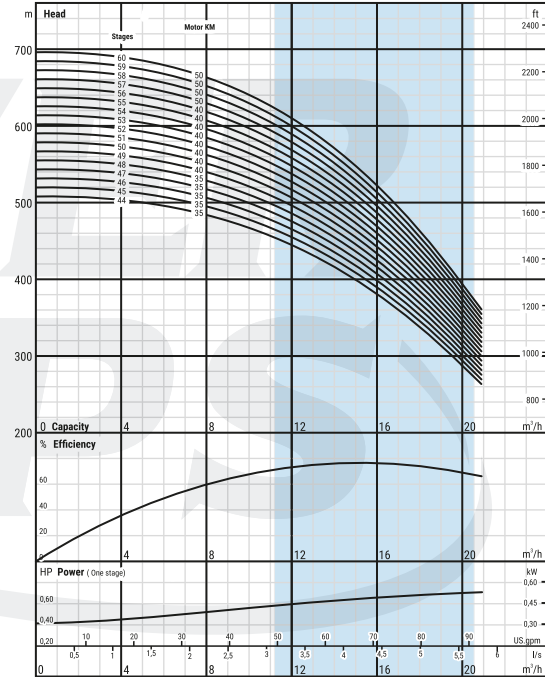
Technical Specifications VSP SS 06017/44 - 60 Range



CONTACT US TODAY 021 556 1834 POWERPUMPS.CO.ZA

- Diffuser** : Stainless steel (AISI 304L) **Max. sand content** : 50 gr / m³
- Impeller** : Stainless steel (AISI 304L) **Valve cap** : Stainless steel
- Pump shaft** : Stainless steel (AISI 420) **Voltage** : 380-415 V (+%6 / -%10)
- Coupling** : Stainless steel (AISI 420) **Frequency** : 50 Hz.
- Strainer** : Stainless steel (AISI 304) **Max. water temperature** : 50°C
- Outlet connection diameter** : 2 1/2" (inside threaded) **Degree of protection** : IP 68

Pump Model	Stages	Motor		Dimensions (mm)					Weight (kg)		
		kW	HP	L	LM	LP	ΦM	ΦP	Motor	Pump	Total
VSP SS 06017/44	44	26,5	35	4287/4071	1106/890	3181	142/172	167	87/86	100	187/186
VSP SS 06017/45	45	26,5	35	4348/4132	1106/890	3242	142/172	167	87/86	102	189/188
VSP SS 06017/46	46	26,5	35	4408/4192	1106/890	3302	142/172	167	87/86	103	190/189
VSP SS 06017/47	47	26,5	35	4469/4253	1106/890	3363	142/172	167	87/86	105	192/191
VSP SS 06017/48	48	26,5	35	4529/4313	1106/890	3423	142/172	167	87/86	107	194/193
VSP SS 06017/49	49	30	40	4701/4424/4480	1217/940/996	3484	142/172/192	167	98/91/120	109	207/200/229
VSP SS 06017/50	50	30	40	4761/4484/4540	1217/940/996	3544	142/172/192	167	98/91/120	111	209/202/231
VSP SS 06017/51	51	30	40	4822/4545/4601	1217/940/996	3605	142/172/192	167	98/91/120	112	210/203/232
VSP SS 06017/52	52	30	40	4882/4605/4661	1217/940/996	3665	142/172/192	167	98/91/120	114	212/205/234
VSP SS 06017/53	53	30	40	4943/4666/4722	1217/940/996	3726	142/172/192	167	98/91/120	116	214/207/236
VSP SS 06017/54	54	30	40	5003/4726/4782	1217/940/996	3786	142/172/192	167	98/91/120	118	216/209/238
VSP SS 06017/55	55	30	40	5064/4787/4843	1217/940/996	3847	142/172/192	167	98/91/120	120	218/211/240
VSP SS 06017/56	56	30	40	5124/4847/4903	1217/940/996	3907	142/172/192	167	98/91/120	121	219/212/241
VSP SS 06017/57	57	37	50	5215/4948/5024	1247/980/1056	3968	142/172/192	167	103/103/129	123	226/226/252
VSP SS 06017/58	58	37	50	5275/5008/5084	1247/980/1056	4028	142/172/192	167	103/103/129	125	228/228/254
VSP SS 06017/59	59	37	50	5336/5069/5145	1247/980/1056	4089	142/172/192	167	103/103/129	127	230/230/256
VSP SS 06017/60	60	37	50	5396/5129/5205	1247/980/1056	4149	142/172/192	167	103/103/129	129	232/232/258





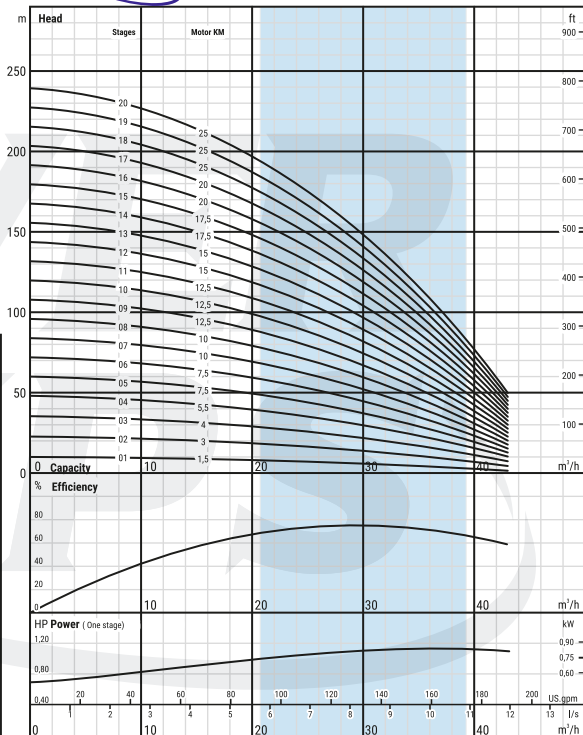
Technical Specifications VSP SS 06030/01 - 20 Range

Diffuser	: Stainless steel (AISI 304L)	Max. sand content	: 50 gr / m ³
Impeller	: Stainless steel (AISI 304L)	Valve cap	: Stainless steel
Pump shaft	: Stainless steel (AISI 420)	Voltage	: 380-415 V (+%6 / -%10)
Coupling	: Stainless steel (AISI 420)	Frequency	: 50 Hz.
Strainer	: Stainless steel (AISI 304)	Max. water temperature	: 50°C
Outlet connection diameter	: 3" (inside threaded)	Degree of protection	: IP 68

Pump Model	Stages	Motor		Dimensions(mm)					Weight(kg)		
		kW	HP	L	LM	LP	ΦM	ΦP	Motor	Pump	Total
VSP SS 06030/01	1	1,1	1,5	765	401	364	95	132	10.35	6	16.35
VSP SS 06030/02	2	2,2	3	930	471	459	95	132	13.9	9	22.9
VSP SS 06030/03	3	3	4	1084	530	554	95	132	16.2	11	27.2
VSP SS 06030/04	4	4	5,5	1249/1298	600/649	649	95/142	132	19.8/40	13	32.8/53
VSP SS 06030/05	5	5,5	7,5	1399/1393	655/649	744	95/142	132	22.5/40	15	37.5/55
VSP SS 06030/06	6	5,5	7,5	1494/1488	655/649	839	95/142	132	22.5/40	17	39.5/57
VSP SS 06030/07	7	7,5	10	1729/1612	795/678	934	95/142	132	28.8/43.5	19	47.8/62.5
VSP SS 06030/08	8	7,5	10	1824/1707	795/678	1029	95/142	132	28.8/43.5	21	49.8/64.5
VSP SS 06030/09	9	9,3	12,5	1882	758	1124	142	132	50	23	73
VSP SS 06030/10	10	9,3	12,5	1977	758	1219	142	132	50	25	75
VSP SS 06030/11	11	9,3	12,5	2072	758	1314	142	132	50	27	77
VSP SS 06030/12	12	11	15	2209	800	1409	142	132	55	29	84
VSP SS 06030/13	13	11	15	2304	800	1504	142	132	55	31	86
VSP SS 06030/14	14	13	17,5	2450	851	1599	142	132	60	33	93
VSP SS 06030/15	15	13	17,5	2545	851	1694	142	132	60	36	96
VSP SS 06030/16	16	15	20	2700	911	1789	142	132	65	38	103
VSP SS 06030/17	17	15	20	2795	911	1884	142	132	65	40	105
VSP SS 06030/18	18	18,5	25	2952	973	1979	142	132	72	42	114
VSP SS 06030/19	19	18,5	25	3047	973	2074	142	132	72	44	116
VSP SS 06030/20	20	18,5	25	3142	973	2169	142	132	72	46	118



CONTACT US TODAY 021 556 1834 POWERPUMPS.CO.ZA





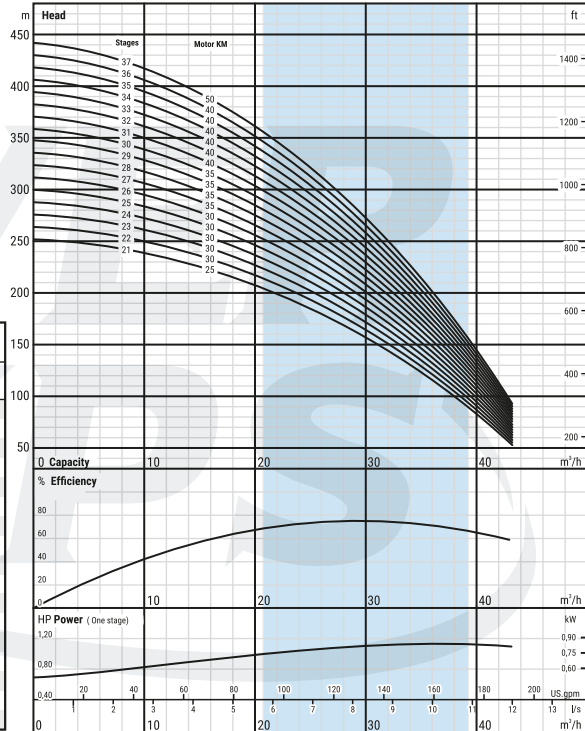
Technical Specifications VSP SS 06030/21 - 37 Range

- Diffuser** : Stainless steel (AISI 304L) **Max. sand content** : 50 gr / m³
- Impeller** : Stainless steel (AISI 304L) **Valve cap** : Stainless steel
- Pump shaft** : Stainless steel (AISI 420) **Voltage** : 380-415 V (+%6 / -%10)
- Coupling** : Stainless steel (AISI 420) **Frequency** : 50 Hz.
- Strainer** : Stainless steel (AISI 304) **Max. water temperature** : 50°C
- Outlet connection diameter** : 3" (inside threaded) **Degree of protection** : IP 68



CONTACT US TODAY 021 556 1834 POWERPUMPS.CO.ZA

Pump Model	Stages	Motor		Dimensions(mm)					Weight(kg)		
		kW	HP	L	LM	LP	ΦM	ΦP	Motor	Pump	Total
VSP SS 06030/21	21	18,5	25	3237	973	2264	142	132	72	48	120
VSP SS 06030/22	22	22	30	3365/3199	1006/840	2359	142/172	132	76/81	50	126/131
VSP SS 06030/23	23	22	30	3460/3294	1006/840	2454	142/172	132	76/81	52	128/133
VSP SS 06030/24	24	22	30	3555/3389	1006/840	2549	142/172	132	76/81	54	130/135
VSP SS 06030/25	25	26,5	35	3750/3534	1106/890	2644	142/172	132	87/86	56	143/142
VSP SS 06030/26	26	26,5	35	3845/3629	1106/890	2739	142/172	132	87/86	58	145/144
VSP SS 06030/27	27	26,5	35	3940/3724	1106/890	2834	142/172	132	87/86	60	147/146
VSP SS 06030/28	28	26,5	35	4035/3819	1106/890	2929	142/172	132	87/86	63	150/149
VSP SS 06030/29	29	26,5	35	4130/3914	1106/890	3024	142/172	132	87/86	65	152/151
VSP SS 06030/30	30	26,5	35	4225/4009	1106/890	3119	142/172	132	87/86	67	154/153
VSP SS 06030/31	31	30	40	4431/4154/4210	1217/940/996	3214	142/172/192	132	98/91/120	69	167/160/189
VSP SS 06030/32	32	30	40	4526/4249/4305	1217/940/996	3309	142/172/192	132	98/91/120	71	169/162/191
VSP SS 06030/33	33	30	40	4621/4344/4400	1217/940/996	3404	142/172/192	132	98/91/120	73	171/164/193
VSP SS 06030/34	34	30	40	4716/4439/4495	1217/940/996	3499	142/172/192	132	98/91/120	75	173/166/195
VSP SS 06030/35	35	30	40	4811/4534/4590	1217/940/996	3594	142/172/192	132	98/91/120	77	175/168/197
VSP SS 06030/36	36	30	40	4906/4629/4685	1217/940/996	3689	142/172/192	132	98/91/120	79	177/170/199
VSP SS 06030/37	37	37	50	5031/4764/4840	1247/980/1056	3784	142/172/192	132	103/103/129	81	184/184/210



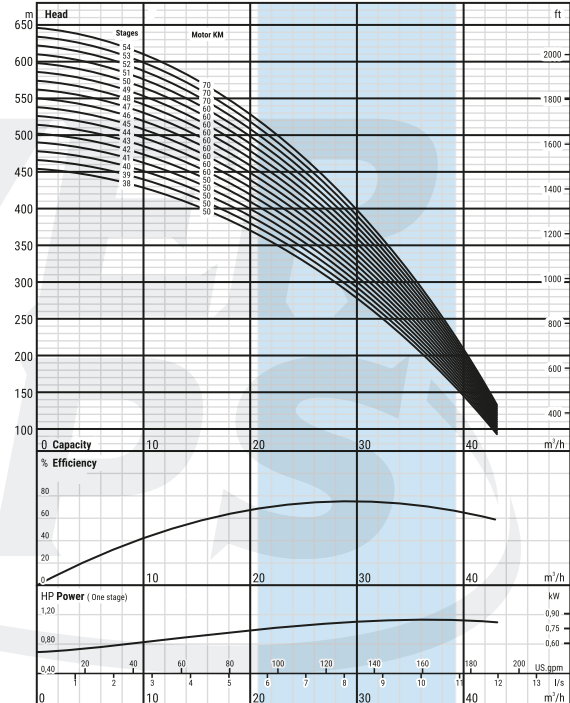


Technical Specifications VSP SS 06030/38 - 54 Range

- Diffuser** : Stainless steel (AISI 304L) **Max. sand content** : 50 gr / m³
- Impeller** : Stainless steel (AISI 304L) **Valve cap** : Stainless steel
- Pump shaft** : Stainless steel (AISI 420) **Voltage** : 380-415 V (+%6 / -%10)
- Coupling** : Stainless steel (AISI 420) **Frequency** : 50 Hz.
- Strainer** : Stainless steel (AISI 304) **Max. water temperature** : 50°C
- Outlet connection diameter** : 3" (inside threaded) **Degree of protection** : IP 68



CONTACT US TODAY 021 556 1834 POWERPUMPS.CO.ZA



Pump Model	Stages	Motor		Dimensions(mm)					Weight(kg)		
		kW	HP	L	LM	LP	ΦM	ΦP	Motor	Pump	Total
VSP SS 06030/38	38	37	50	5126/4859/4935	1247/980/1056	3879	142/172/192	132	103/103/129	83	186/186/212
VSP SS 06030/39	39	37	50	5471/5204/5280	1247/980/1056	4224	142/172/192	132	103/103/129	124	227/227/253
VSP SS 06030/40	40	37	50	5566/5299/5375	1247/980/1056	4319	142/172/192	167	103/103/129	126	229/229/255
VSP SS 06030/41	41	37	50	5661/5394/5470	1247/980/1056	4414	142/172/192	167	103/103/129	129	232/232/258
VSP SS 06030/42	42	37	50	5756/5489/5565	1247/980/1056	4509	142/172/192	167	103/103/129	132	235/235/261
VSP SS 06030/43	43	45	60	5951/5664/5720	1347/1060/1116	4604	142/172/192	167	110/113/138	134	244/247/272
VSP SS 06030/44	44	45	60	6046/5759/5815	1347/1060/1116	4699	142/172/192	167	110/113/138	137	247/250/275
VSP SS 06030/45	45	45	60	6141/5854/5910	1347/1060/1116	4794	142/172/192	167	110/113/138	139	249/252/277
VSP SS 06030/46	46	45	60	6236/5949/6005	1347/1060/1116	4889	142/172/192	167	110/113/138	142	252/255/280
VSP SS 06030/47	47	45	60	6331/6044/6100	1347/1060/1116	4984	142/172/192	167	110/113/138	145	255/258/283
VSP SS 06030/48	48	45	60	6426/6139/6195	1347/1060/1116	5079	142/172/192	167	110/113/138	147	257/260/285
VSP SS 06030/49	49	45	60	6521/6234/6290	1347/1060/1116	5174	142/172/192	167	110/113/138	150	260/263/288
VSP SS 06030/50	50	45	60	6616/6329/6385	1347/1060/1116	5269	142/172/192	167	110/113/138	152	262/265/290
VSP SS 06030/51	51	45	60	6711/6424/6480	1347/1060/1116	5364	142/172/192	167	110/113/138	155	265/268/293
VSP SS 06030/52	52	52	70	6598/6660	1139/1201	5459	172/192	167	127/152	158	285/310
VSP SS 06030/53	53	52	70	6693/6755	1139/1201	5554	172/192	167	127/152	160	287/312
VSP SS 06030/54	54	52	70	6788/6850	1139/1201	5649	172/192	167	127/152	163	290/315



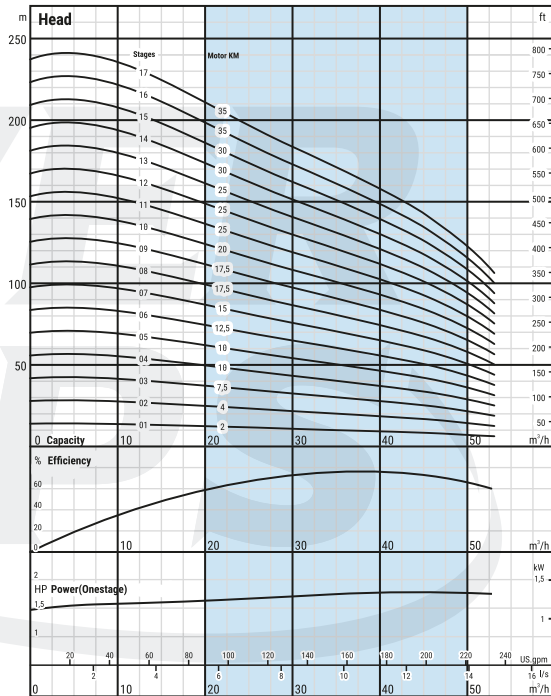
Technical Specifications VSP SS 06036/01 - 17 Range

Diffuser	: Stainless steel (AISI 304L)	Max. sand content	: 50 gr / m ³
Impeller	: Stainless steel (AISI 304L)	Valve cap	: Stainless steel
Pump shaft	: Stainless steel (AISI 420)	Voltage	: 380-415 V (+%6 / -%10)
Coupling	: Stainless steel (AISI 420)	Frequency	: 50 Hz.
Strainer	: Stainless steel (AISI 304)	Max. water temperature	: 50°C
Outlet connection diameter	: 4" (inside threaded)	Degree of protection	: IP 68



CONTACT US TODAY 021 556 1834 POWERPUMPS.CO.ZA

Pump Model	Stages	Motor		Dimensions(mm)					Weight(kg)		
		kW	HP	L	LM	LP	Φ M	Φ P	Motor	Pump	Total
VSP SS 06036/01	1	1,5	2	823	441	382	95	144	10.4	7	17.4
VSP SS 06036/02	2	3	4	1024	530	494	95	144	16.2	10	26.2
VSP SS 06036/03	3	5,5	7,5	1261/1255	655/649	606	95/142	144	22.5/40	12	34.5/52
VSP SS 06036/04	4	7,5	10	1513/1396	795/678	718	95/142	144	28.8/43.5	15	43.8/58.5
VSP SS 06036/05	5	7,5	10	1625/1508	795/678	830	95/142	144	28.8/43.5	18	46.8/61.5
VSP SS 06036/06	6	9,3	12,5	1700	758	942	142	144	50	20	70
VSP SS 06036/07	7	11	15	1854	800	1054	142	144	55	23	78
VSP SS 06036/08	8	13	17,5	2017	851	1166	142	144	60	26	86
VSP SS 06036/09	9	13	17,5	2129	851	1278	142	144	60	28	88
VSP SS 06036/10	10	15	20	2301	911	1390	142	144	65	31	96
VSP SS 06036/11	11	18,5	25	2475	973	1502	142	144	72	34	106
VSP SS 06036/12	12	18,5	25	2587	973	1614	142	144	72	36	108
VSP SS 06036/13	13	18,5	25	2699	973	1726	142	144	72	39	111
VSP SS 06036/14	14	22	30	2844/2678	1006/840	1838	142/172	144	76/81	42	118/123
VSP SS 06036/15	15	22	30	2956/2790	1006/840	1950	142/172	144	76/81	44	120/125
VSP SS 06036/16	16	26,5	35	3168/2952	1106/890	2062	142/172	144	87/86	47	134/133
VSP SS 06036/17	17	26,5	35	3280/3064	1106/890	2174	142/172	144	87/86	49	136/135





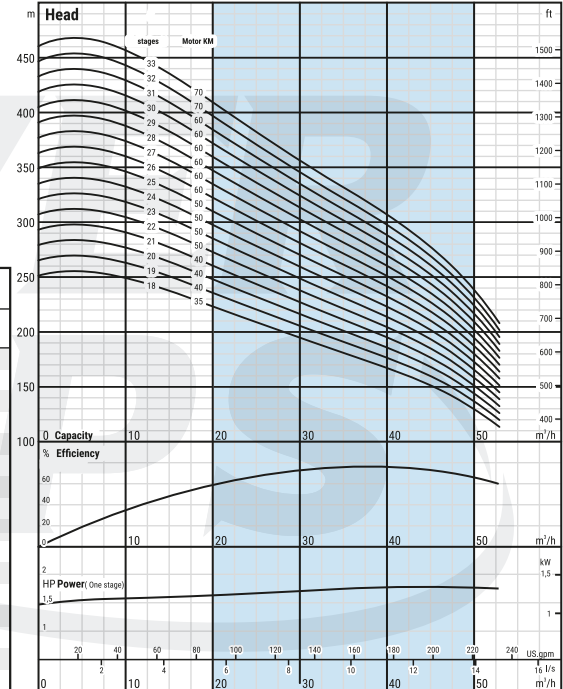
Technical Specifications VSP SS 06036/17 - 33 Range



CONTACT US TODAY 021 556 1834 POWERPUMPS.CO.ZA

- | | | | |
|-----------------------------------|-------------------------------|-------------------------------|--------------------------|
| Diffuser | : Stainless steel (AISI 304L) | Max. sand content | : 50 gr / m ³ |
| Impeller | : Stainless steel (AISI 304L) | Valve cap | : Stainless steel |
| Pump shaft | : Stainless steel (AISI 420) | Voltage | : 380-415 V (+%6 / -%10) |
| Coupling | : Stainless steel (AISI 420) | Frequency | : 50 Hz. |
| Strainer | : Stainless steel (AISI 304) | Max. water temperature | : 50°C |
| Outlet connection diameter | : 4" (inside threaded) | Degree of protection | : IP 68 |

Pump Model	Stages	Motor		Dimensions(mm)					Weight(kg)		
		kW	HP	L	LM	LP	Φ M	Φ P	Motor	Pump	Total
VSP SS 06036/18	18	26,5	35	3392/3176	1106/890	2286	142/172	144	87/86	52	139/138
VSP SS 06036/19	19	30	40	3615/3338/3394	1217/940/996	2398	142/172/192	144	98/91/120	55	153/146/175
VSP SS 06036/20	20	30	40	3727/3450/3506	1217/940/996	2510	142/172/192	144	98/91/120	57	155/148/177
VSP SS 06036/21	21	30	40	3839/3562/3618	1217/940/996	2622	142/172/192	144	98/91/120	60	158/151/180
VSP SS 06036/22	22	37	50	3981/3714/3790	1247/980/1056	2734	142/172/192	144	103/103/129	63	166/166/192
VSP SS 06036/23	23	37	50	4093/3826/3902	1247/980/1056	2846	142/172/192	144	103/103/129	65	168/168/194
VSP SS 06036/24	24	37	50	4205/3938/4014	1247/980/1056	2958	142/172/192	144	103/103/129	68	171/171/197
VSP SS 06036/25	25	37	50	4317/4050/4126	1247/980/1056	3070	142/172/192	144	103/103/129	71	174/174/200
VSP SS 06036/26	26	45	60	4529/4242/4298	1347/1060/1116	3182	142/172/192	144	110/113/138	73	183/186/211
VSP SS 06036/27	27	45	60	4641/4354/4410	1347/1060/1116	3294	142/172/192	144	110/113/138	76	186/189/214
VSP SS 06036/28	28	45	60	4753/4466/4522	1347/1060/1116	3406	142/172/192	144	110/113/138	79	189/192/217
VSP SS 06036/29	29	45	60	4865/4578/4634	1347/1060/1116	3518	142/172/192	144	110/113/138	81	191/194/219
VSP SS 06036/30	30	45	60	4977/4690/4746	1347/1060/1116	3630	142/172/192	144	110/113/138	84	194/197/222
VSP SS 06036/31	31	45	60	5089/4802/4858	1347/1060/1116	3742	142/172/192	144	110/113/138	86	196/199/224
VSP SS 06036/32	32	52	70	4993/5055	1139/1201	3854	172/192	144	127/152	89	216/241
VSP SS 06036/33	33	52	70	5105/5167	1139/1201	3966	172/192	144	127/152	92	219/244



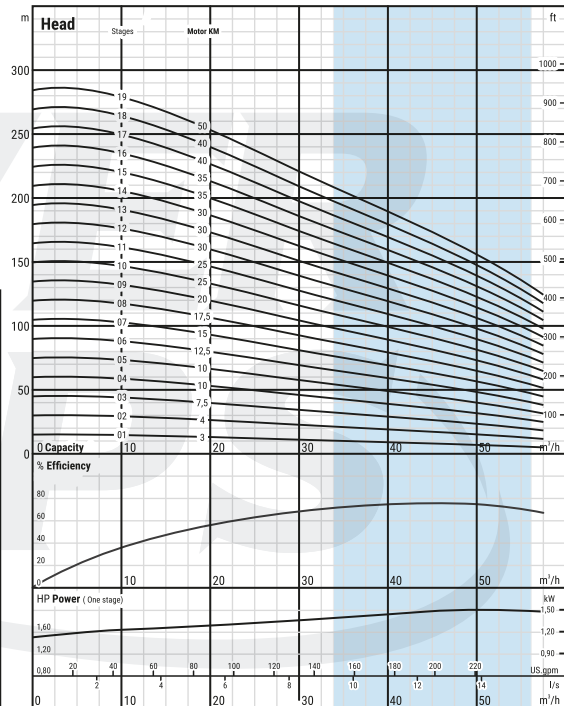
Technical Specifications VSP SS 06045/01 - 19 Range



CONTACT US TODAY 021 556 1834 POWERPUMPS.CO.ZA

Diffuser	: Stainless steel (AISI 304L)	Max. sand content	: 50 gr / m ³
Impeller	: Stainless steel (AISI 304L)	Valve cap	: Stainless steel
Pump shaft	: Stainless steel (AISI 420)	Voltage	: 380-415 V (+%6 / -%10)
Coupling	: Stainless steel (AISI 420)	Frequency	: 50 Hz.
Strainer	: Stainless steel (AISI 304)	Max. water temperature	: 50°C
Outlet connection diameter	: 4" (inside threaded)	Degree of protection	: IP 68

Pump Model	Stages	Motor		Dimensions(mm)					Weight(kg)		
		kW	HP	L	LM	LP	ΦM	ΦP	Motor	Pump	Total
VSP SS 06045/01	1	2,2	3	853	471	382	95	144	13,9	7	20,9
VSP SS 06045/02	2	3	4	1024	530	494	95	144	16,2	10	26,2
VSP SS 06045/03	3	5,5	7,5	1261/1255	655/649	606	95/142	144	22,5/40	12	34,5/52
VSP SS 06045/04	4	7,5	10	1513/1396	795/678	718	95/142	144	28,8/43,5	15	43,8/58,5
VSP SS 06045/05	5	7,5	10	1625/1508	795/678	830	95/142	144	28,8/43,5	18	46,8/61,5
VSP SS 06045/06	6	9,3	12,5	1700	758	942	142	144	50	20	70
VSP SS 06045/07	7	11	15	1854	800	1054	142	144	55	23	78
VSP SS 06045/08	8	13	17,5	2017	851	1166	142	144	60	26	86
VSP SS 06045/09	9	15	20	2189	911	1278	142	144	65	28	93
VSP SS 06045/10	10	18,5	25	2363	973	1390	142	144	72	31	103
VSP SS 06045/11	11	18,5	25	2475	973	1502	142	144	72	34	106
VSP SS 06045/12	12	22	30	2620/2454	1006/840	1614	142/172	144	76/81	36	112/117
VSP SS 06045/13	13	22	30	2732/2566	1006/840	1726	142/172	144	76/81	39	115/120
VSP SS 06045/14	14	22	30	2844/2678	1006/840	1838	142/172	144	76/81	42	118/123
VSP SS 06045/15	15	26,5	35	3056/2840	1106/890	1950	142/172	144	87/86	44	131/130
VSP SS 06045/16	16	26,5	35	3168/2952	1106/890	2062	142/172	144	87/86	47	134/133
VSP SS 06045/17	17	30	40	3391/3114/3170	1217/940/996	2174	142/172/192	144	98/91/120	49	147/140/169
VSP SS 06045/18	18	30	40	3503/3226/3282	1217/940/996	2286	142/172/192	144	98/91/120	52	150/143/172
VSP SS 06045/19	19	37	50	3645/3378/3454	1247/980/1056	2398	142/172/192	144	103/103/129	55	158/158/184





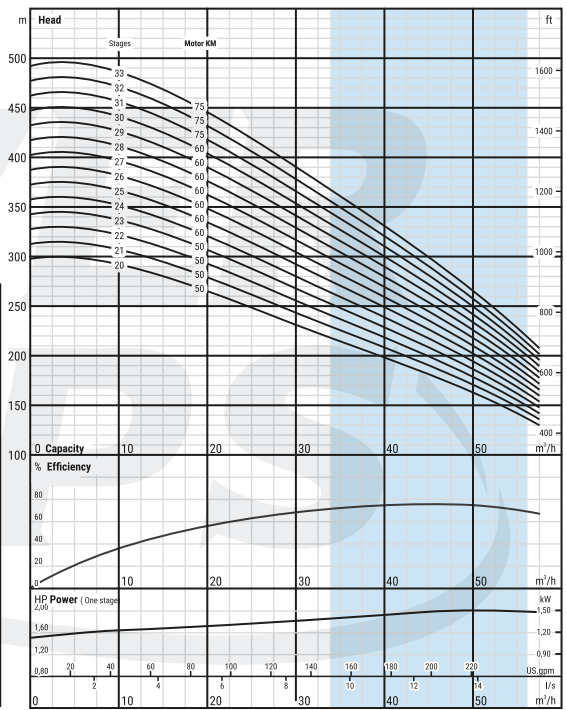
Technical Specifications VSP SS 06045/20 - 33 Range

- Diffuser** : Stainless steel (AISI 304L) **Max. sand content** : 50 gr / m³
- Impeller** : Stainless steel (AISI 304L) **Valve cap** : Stainless steel
- Pump shaft** : Stainless steel (AISI 420) **Voltage** : 380-415 V (+%6 / -%10)
- Coupling** : Stainless steel (AISI 420) **Frequency** : 50 Hz.
- Strainer** : Stainless steel (AISI 304) **Max. water temperature** : 50°C
- Outlet connection diameter** : 4 " (inside threaded) **Degree of protection** : IP 68



CONTACT US TODAY 021 556 1834 POWERPUMPS.CO.ZA

Pump Model	Stages	Motor		Dimensions(mm)					Weight(kg)		
		kW	HP	L	LM	LP	Φ M	Φ P	Motor	Pump	Total
VSP SS 06045/20	20	37	50	3757/3490/3566	1247/980/1056	2510	142/172/192	144	103/103/129	57	160/160/186
VSP SS 06045/21	21	37	50	3869/3602/3678	1247/980/1056	2622	142/172/192	144	103/103/129	60	163/163/189
VSP SS 06045/22	22	37	50	3981/3714/3790	1247/980/1056	2734	142/172/192	144	103/103/129	63	166/166/192
VSP SS 06045/23	23	37	50	4093/3826/3902	1247/980/1056	2846	142/172/192	144	103/103/129	65	168/168/194
VSP SS 06045/24	24	45	60	4305/4018/4074	1347/1060/1116	2958	142/172/192	144	110/113/138	68	178/181/206
VSP SS 06045/25	25	45	60	4417/4130/4186	1347/1060/1116	3070	142/172/192	144	110/113/138	71	181/184/209
VSP SS 06045/26	26	45	60	4529/4242/4298	1347/1060/1116	3182	142/172/192	144	110/113/138	73	183/186/211
VSP SS 06045/27	27	45	60	4641/4354/4410	1347/1060/1116	3294	142/172/192	144	110/113/138	76	186/189/214
VSP SS 06045/28	28	45	60	4753/4466/4522	1347/1060/1116	3406	142/172/192	144	110/113/138	79	189/192/217
VSP SS 06045/29	29	45	60	4865/4578/4634	1347/1060/1116	3518	142/172/192	144	110/113/138	81	191/194/219
VSP SS 06045/30	30	45	60	4977/4690/4746	1347/1060/1116	3630	142/172/192	144	110/113/138	84	194/197/222
VSP SS 06045/31	31	55	75	4960/5028	1218/1286	3742	172/192	144	138/170	86	224/256
VSP SS 06045/32	32	55	75	5072/5140	1218/1286	3854	172/192	144	138/170	89	227/259
VSP SS 06045/33	33	55	75	5184/5252	1218/1286	3966	172/192	144	138/170	92	230/262





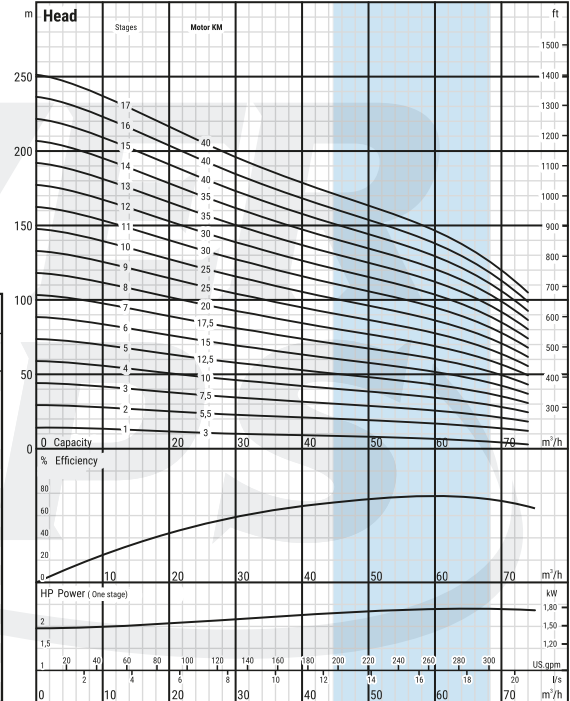
Technical Specifications VSP SS 06060/01 - 17 Range

- Diffuser** : Stainless steel (AISI 304L) **Max. sand content** : 50 gr / m³
- Impeller** : Stainless steel (AISI 304L) **Valve cap** : Stainless steel
- Pump shaft** : Stainless steel (AISI 420) **Voltage** : 380-415 V (+%6 / -%10)
- Coupling** : Stainless steel (AISI 420) **Frequency** : 50 Hz.
- Strainer** : Stainless steel (AISI 304) **Max. water temperature** : 50°C
- Outlet connection diameter** : 4" (inside threaded) **Degree of protection** : IP 68



CONTACT US TODAY 021 556 1834 POWERPUMPS.CO.ZA

Pump Model	Stages	Motor		Dimensions(mm)					Weight(kg)		
		kW	HP	L	LM	LP	ΦM	ΦP	Motor	Pump	Total
VSP SS 06060/01	1	2,2	3	853	471	382	95	144	13.9	7	20.9
VSP SS 06060/02	2	4	5,5	1094/1143	600/649	494	95/142	144	19.8/40	10	29.8/50
VSP SS 06060/03	3	5,5	7,5	1261/1255	655/649	606	95/142	144	22.5/40	12	34.5/52
VSP SS 06060/04	4	7,5	10	1513/1396	795/678	718	95/142	144	28.8/43.5	15	43.8/58.5
VSP SS 06060/05	5	9,3	12,5	1588	758	830	142	144	50	18	68
VSP SS 06060/06	6	11	15	1742	800	942	142	144	55	20	75
VSP SS 06060/07	7	13	17,5	1905	851	1054	142	144	60	23	83
VSP SS 06060/08	8	15	20	2077	911	1166	142	144	65	26	91
VSP SS 06060/09	9	18,5	25	2251	973	1278	142	144	72	28	100
VSP SS 06060/10	10	18,5	25	2363	973	1390	142	144	72	31	103
VSP SS 06060/11	11	22	30	2508/2342	1006/840	1502	142/172	144	76/81	34	110/115
VSP SS 06060/12	12	22	30	2620/2454	1006/840	1614	142/172	144	76/81	36	112/117
VSP SS 06060/13	13	26,5	35	2832/2616	1106/890	1726	142/172	144	87/86	39	126/125
VSP SS 06060/14	14	26,5	35	2944/2728	1106/890	1838	142/172	144	87/86	42	129/128
VSP SS 06060/15	15	30	40	3167/2890/2946	1217/940/996	1950	142/172/192	144	98/91/120	44	142/135/164
VSP SS 06060/16	16	30	40	3279/3002/3058	1217/940/996	2062	142/172/192	144	98/91/120	47	145/138/167
VSP SS 06060/17	17	30	40	3391/3114/3170	1217/940/996	2174	142/172/192	144	98/91/120	50	148/141/170



Technical Specifications VSP SS 06060/18 - 30 Range



CONTACT US TODAY 021 556 1834 POWERPUMPS.CO.ZA

- Diffuser** : Stainless steel (AISI 304L) **Max. sand content** : 50 gr / m³
- Impeller** : Stainless steel (AISI 304L) **Valve cap** : Stainless steel
- Pump shaft** : Stainless steel (AISI 420) **Voltage** : 380-415 V (+%6 / -%10)
- Coupling** : Stainless steel (AISI 420) **Frequency** : 50 Hz.
- Strainer** : Stainless steel (AISI 304) **Max. water temperature** : 50°C
- Outlet connection diameter** : 4" (inside threaded) **Degree of protection** : IP 68

Pump Model	Stages	Motor		Dimensions(mm)					Weight(kg)		
		kW	HP	L	LM	LP	ΦM	ΦP	Motor	Pump	Total
VSP SS 06060/18	18	37	50	3533/3266/3342	1247/980/1056	2286	142/172/192	144	103/103/129	52	155/155/181
VSP SS 06060/19	19	37	50	3645/3378/3454	1247/980/1056	2398	142/172/192	144	103/103/129	55	158/158/184
VSP SS 06060/20	20	37	50	3757/3490/3566	1247/980/1056	2510	142/172/192	144	103/103/129	58	161/161/187
VSP SS 06060/21	21	37	50	3869/3602/3678	1247/980/1056	2622	142/172/192	144	103/103/129	60	163/163/189
VSP SS 06060/22	22	45	60	4081/3794/3850	1347/1060/1116	2734	142/172/192	144	110/113/138	63	173/176/201
VSP SS 06060/23	23	45	60	4193/3906/3962	1347/1060/1116	2846	142/172/192	144	110/113/138	65	175/178/203
VSP SS 06060/24	24	45	60	4305/4018/4074	1347/1060/1116	2958	142/172/192	144	110/113/138	68	178/181/206
VSP SS 06060/25	25	52	70	4209/4271	1139/1201	3070	172/192	144	127/152	71	198/223
VSP SS 06060/26	26	52	70	4321/4383	1139/1201	3182	172/192	144	127/152	73	200/225
VSP SS 06060/27	27	52	70	4433/4495	1139/1201	3294	172/192	144	127/152	76	203/228
VSP SS 06060/28	28	52	70	4545/4607	1139/1201	3406	172/192	144	127/152	79	206/231
VSP SS 06060/29	29	55	75	4736/4804	1218/1286	3518	172/192	144	138/170	81	219/251
VSP SS 06060/30	30	55	75	4848/4916	1218/1286	3630	172/192	144	138/170	84	222/254

